

3-WAY ADJUSTABLE CONCEALED HINGE **HES3D-W190** Wide Throw

INSTRUCTION



Silver

Champagne Gold



Black

Nickel

- Has a long arm for a wider throw. This allows for use on clad and thick doors.
- Thin profile allows for shallow mortise.
- Vertical, horizontal and depth adjustments are available.
- For simplified door hanging, the hinge divides into two parts: one for the door-side and one for the frame-side.
- Can temporarily be hung before fixing with screws.
- Custom colours are available.
- Replacement screw covers are also available. Please contact us.

[Remarks]

- Read all remarks on handling thoroughly before use.
- Please use the Selection Tool for HES Concealed Hinges to select a hinge.

[Parts Included]

- Cross-recessed countersunk tapping screw 5 × 30 (8 pcs / hinge) stainless steel
- Hex key 4
- Cutout template

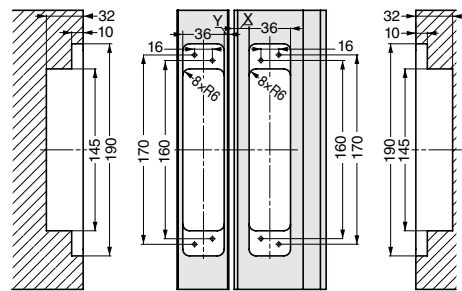
[Optional Parts]

- Installation jig HES3D-W190-TMP 1
- Stainless steel screw cover (made to order)



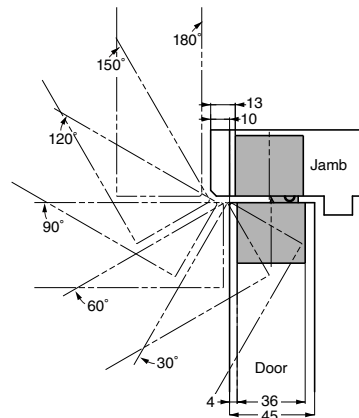
Hinge Selection

[Cut Out Dimension]

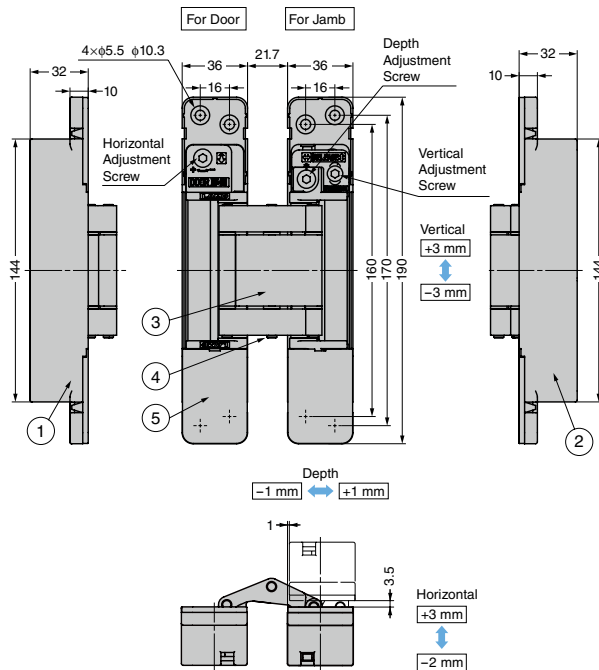


Please drill prepared holes for the tapping screws if the optional jig (HES3D-W190-TMP) is not used.

[Locus Chart]



The example drawing shows the case that there is a step of 10 mm between the door and the jamb.



No.	Part Name	Material	Finish/Colour			
			DC	DN	BL	PN
①	Body	Zinc Alloy (ZDC)	Satin	Nickel	Enamel Black	Polished Nickel
②	Base Frame					
③	Arm	Aluminium Alloy				
④	Shaft	Stainless Steel	Plain	Plain	Plain	Plain
⑤	Screw Cover	ABS	Silver	Champagne Gold	Black	Polished Nickel

Refer to 1 : P.167